



TCS385 Trawl Sled Sonar Series

**A sled to fit trawl nets
of all sizes**

Models 385-500; 385-300; 385-180



**Identify dispersed and difficult to distinguish
fish...even differentiate between species**

Lightweight Technology for Optimum Catch



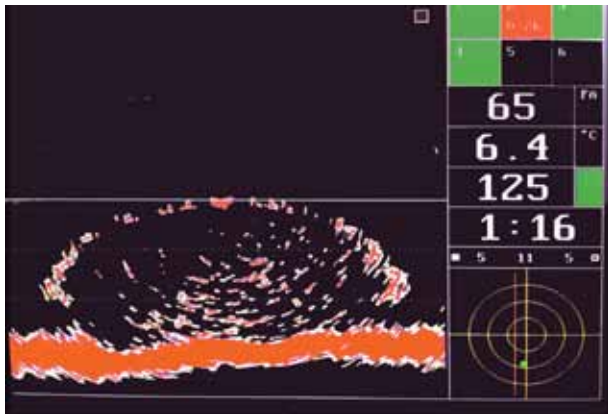
Three multiple function trawl sleds...pick the color that fits your net and your fishing.

TCS385-500 **YELLOW**:

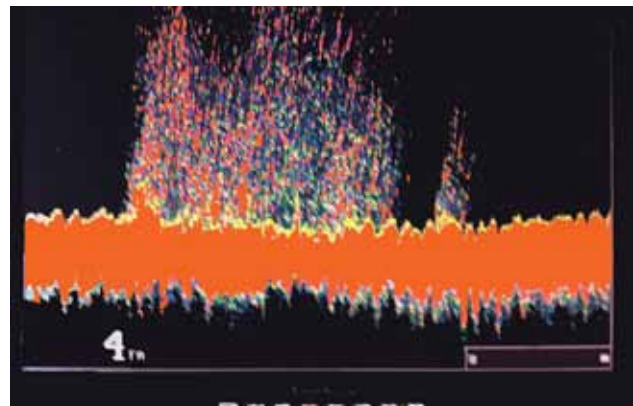
Amazing Detail: The TCS385-500 is ideal for differentiating between species of rock fish and for finding cod and flat fish. Thanks to the extremely detailed discrimination near the bottom, the 500 allows captains to see more dispersed fish and dispersed or low target strength fish coming into the net. Captains say they can even differentiate between fish species. In profile/split screen operates at 500 kHz; in down sounder at 500 kHz.



Model 385-500



TCS385-500 in full screen profile showing dusky's and northern's entering the net.



TCS385-500 in down sounder mode showing rockfish going into the net with 4 fathom vertical opening.

Better Interface: The operation screen displays critical towing information. Once the screen is set you do not need the menus; however, you can bring them back up if necessary. The new operation screen constantly gives valuable information when towing, showing the catch sensors, water temperature, depth of trawl, voltage, roll and pitch, and tow time.

Spilt Screens:

Select profile & down sounder for simultaneous viewing. Each transducer has its own adjustments to bring out the best resolution. The down sounder keeps a steady view of the net opening, fish and footrope while the captain can take measurements on the other screen. Activate the 4X zoom feature and follow the footrope and bottom relation.

Pressure Sensor constantly monitors the depth of the headrope making it possible to align the net with the fish as they pass under the boat.

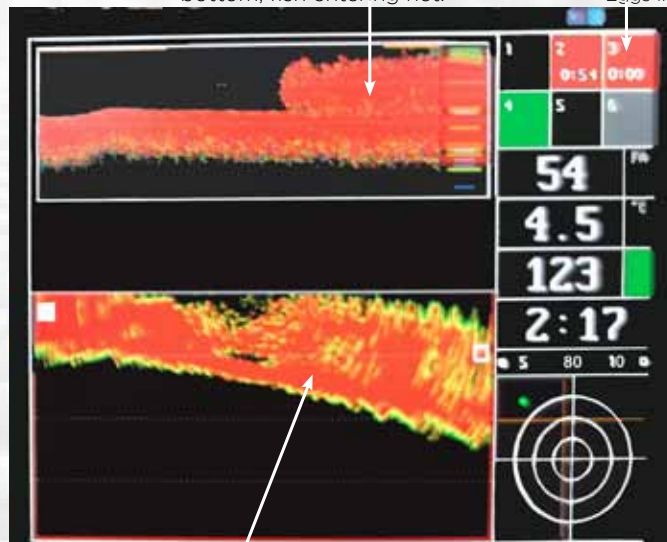
Depth Sounder indicates how far down the slope the net is fishing.

Data Output allows connection to a compatible video sounder and view a depth line across the screen that represents the positions of the net. Align the net line with fish targets on the screen before the fish reach the net.

Catch Sensors works with up to 6.

TCS385 Trawl in Split Screen Mode... Sounder screen on the top half; profile on the bottom half.

Headrope Sounder: Footrope on bottom, fish entering net.



Profile Screen showing net opening full of fish.

- ← Squares turn red when triggered starting timer.
- ← Depth
- ← Temperature
- ← Voltage down the cable. Green box is third wire communication.
- ← Tow timer.
- ← Cursors to measure net opening.
- ← 360° Level Sensor or History graph of trawl depth and temperature.

Improve catch volume, quality and help avoid bycatch while saving fuel.

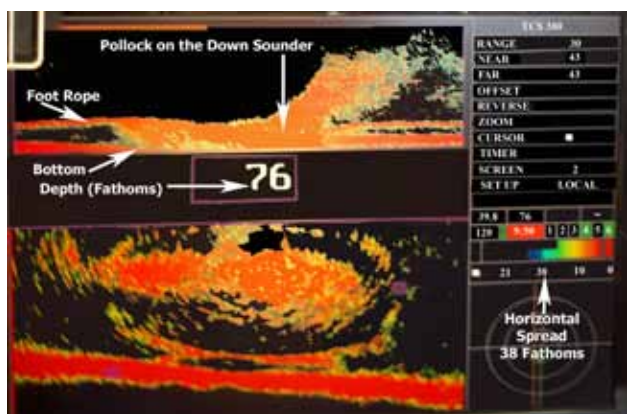
TCS385-300 ORANGE:

Greater Distance: The TCS385-300 trawl sled is ideal for watching the larger trawl nets to ensure fish are not escaping. Popular for cod nets and mid-water trawl nets.

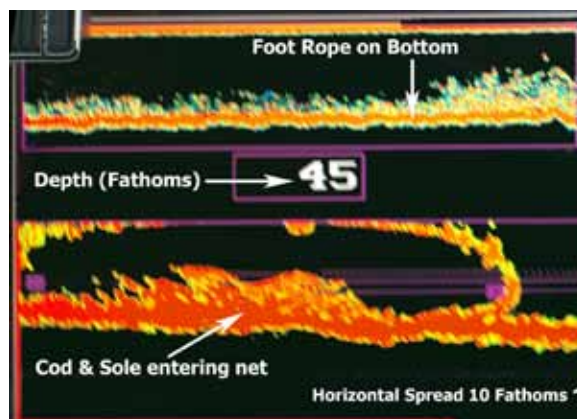
Profile/split screen operates at 300 kHz; down sounder at 200 kHz.



Model 385-300



TCS385-300 in split screen showing pollock on the down sounder. Fish trying to dive under the footrope so the Captain set more wire to get under them.



TCS385-300 in split screen showing cod and sole entering the net.

Profile the net opening with the compact lightweight WESMAR trawl sleds

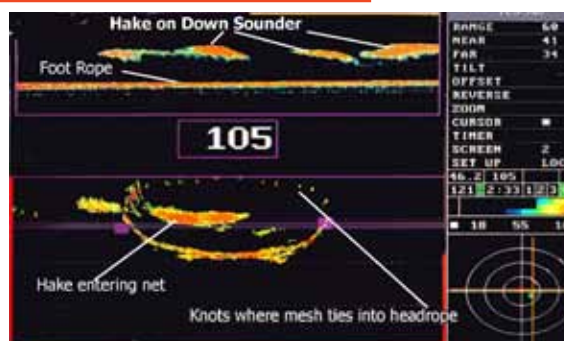
TCS385-180 GREEN:



Model 385-180

Plenty of Power: The TCS385-180 trawl sled has the power to paint the large nets and see the footrope and bottom in high resolution. Designed for the smaller vessels pulling larger nets and the need to see at greater distance. The 180 kHz trawl is a long-range system that is ideal when distance trumps the need to identify fish species.

Profile/Split Screen 180 kHz; Downsounder 110 kHz



TCS385-180 trawling for hake with the sonar in split screen at 105 fathoms; horizontal net spread of 55 fathoms

Lightweight: Each of the 385 series sleds weigh 26.5lbs, 12 kg dry; 9.9 lbs, 4.5 kgs wet. Lightest in the industry.

Trawl Sonar

Specifications

TCS385-500 HEADROPE UNIT (SLED)

Working Depth: 1000m
Frequency: 500kHz Down Sounder
500kHz Profile
Catch Sensors: 1 to 6 Wesmar sensors, 1 to 4 other sensors
Depth Sensor: Meter, Fathom, Feet
Temperature: +0.1 degree Centigrade
Weight: 26.5lbs, 12 kg dry: 9.9 lbs, 4.5 kg wet

TCS385-300 HEADROPE UNIT (SLED)

Working Depth: 1000m
Frequency: 200kHz Down Sounder
300kHz Profile
Catch Sensors: 1 to 6 Wesmar sensors, 1 to 4 other sensors
Depth Sensor: Meter, Fathom, Feet
Temperature: +0.1 degree Centigrade
Weight: 26.5lbs, 12 kg dry: 9.9 lbs, 4.5 kg wet

TCS385-180 HEADROPE UNIT (SLED)

Working Depth: 1000m
Frequency: 110kHz Down Sounder
180kHz Profile
Catch Sensors: 1 to 6 Wesmar sensors, 1 to 4 other sensors
Depth Sensor: Meter, Fathom, Feet
Temperature: +0.1 degree Centigrade
Weight: 26.5lbs, 12 kg dry: 9.9 lbs, 4.5 kg wet

WESMAR's low frequency trawl sonars use a gold plated high resolution transducer.



Each of the three lightweight Model TCS385 trawl sleds comes with a cable guard carrying handle.



Hand Control:

The hand control makes the operation easy and more accessible throughout the wheelhouse.



Dual Battery Charger: MODEL DBC20

Input voltage: 110 to 220 volts AC
Charge current: constant current, 400 ma
Dual Charger: one or two eggs at any time
Time to charge: CS20, 5 hours
Maintenance charge: Pre-charge, top-off and trickle pulse

Catch Sensors:

A large codend can use more than four sensors to monitor the catch rate. WESMAR catch sensors are quick to respond providing the best protection from overfilling the net.



Western Marine Electronics 14120 NE 200th Street, Woodinville, WA 98072
Tel: (425) 481-2296 Fax: (425) 486-0909
www.wesmar.com