



# **5 New Sleds** TCS785 and TCS385 Trawl Sonars Series

**Introducing SMART SLEDs...  
to fit any sized trawl net!**

## **Models TCS785-300 and TCS785-180**



Three sonars in one: forward scan,  
net profile, and sounder.



## **Models 385-500; 385-300; 385-180**



Identify dispersed and difficult to distinguish fish...  
even differentiate between species

Lightweight Technology for Optimum Catch



# Five **New** Trawl Sonars With Multiple Functions.

**NEW**

**Smart Sleds:** What are smart sleds? Sleds that remember. All of WESMAR's new trawl sleds have a memory capability that saves valuable time and ensures accuracy. Once the Captain enters his settings he can save them to memory. Every time the system is powered up the settings are still there. Not only does the memory component save countless hours of re-entering information, it is a sure way to avoid errors. Without memory the settings have to be kept elsewhere and re-entered each time another sled is connected. For fleets it has the added advantage of maintaining important information when sleds are loaned to other boats.

Choose the sled that fits your application.

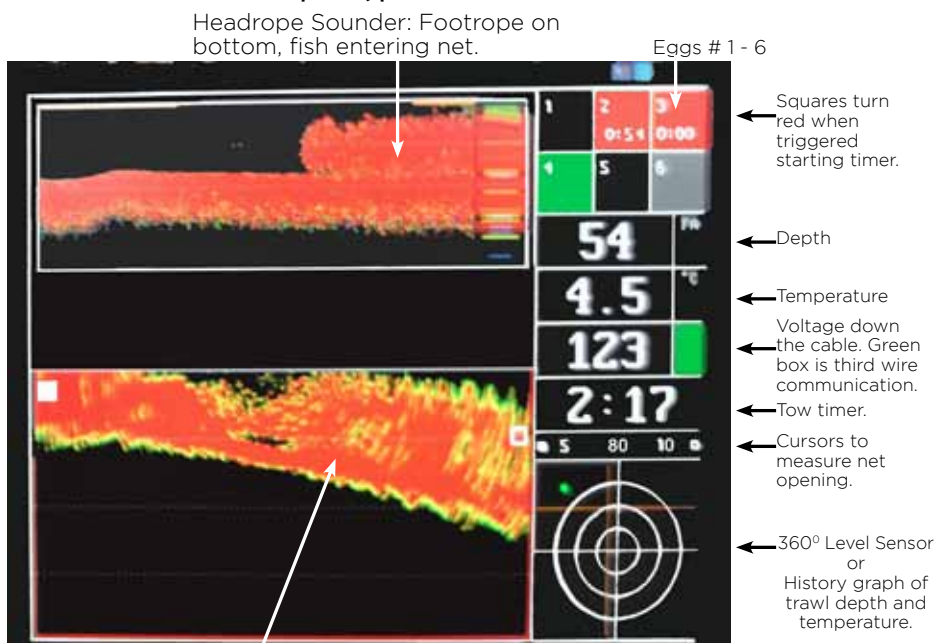
## TCS785-300 or TCS785-180

**TCS785:** This model is three sonars in one: forward scan, net profile, and sounder and the sleds are available in 300 and 180 kHz. **The lower the frequency the greater the range.** The **TCS785-180 kHz GREEN sled** is a long-range system designed for larger nets with a large vertical and horizontal opening. The **TCS785-300 kHz ORANGE sled** is a higher frequency model with high resolution designed for smaller nets. At 300 kHz the footrope/bottom relation can be viewed in greater detail. Both models can scan forward of the net and view the doors.

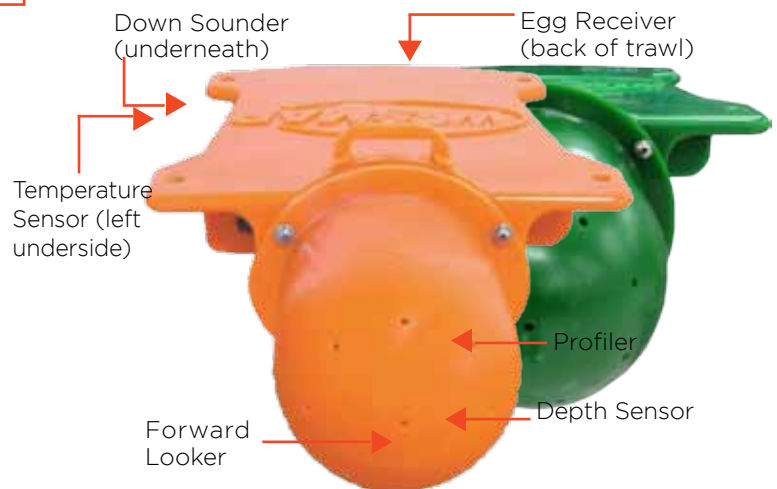
**Better Interface:** A new operation screen showing critical towing information, allows more information than ever before immediately at your fingertips. Once the screen is set you do not need the menus; however, you can bring them back up if necessary. The new operation screen constantly gives valuable information when towing, showing the catch sensors, water temperature, depth of trawl, voltage, roll and pitch, and tow time.

### TCS385 Trawl in Split Screen Mode...

**Sounder screen on the top half; profile on the bottom half.**



Profile Screen showing net opening full of fish.



**Pressure Sensor** constantly monitors the depth of the headrope making it possible to align the net with the fish as they pass under the boat.

**Depth Sounder** will show the vertical net opening, footrope and bottom.

**Data Output** allows you to connect to a compatible video sounder and view a depth line across the screen that represents the positions of the net. Align the net line with fish targets on the screen before the fish reach the net.

**Tow Timer** starts automatically when the system is turned on. Or, reset the timer any time.

**Sharp Detail** constantly monitors the depth of the headrope making it possible to align the net with the fish as they pass under the boat.



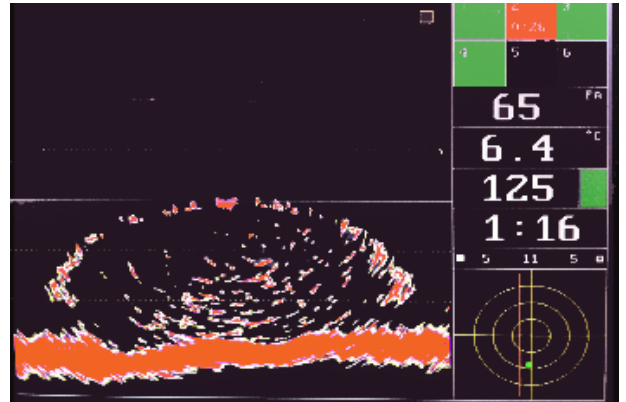
Pick the sled that fits your net and your fishing.

## TCS385-500 **YELLOW**: Model 385-500



**Amazing Detail:** The TCS385-500 is ideal for differentiating between species of rock fish and for marking cod and flat fish. Extremely detailed

discrimination near the bottom, allows captains to see more dispersed fish and low target strength fish coming into the net. Captains say they can even differentiate between fish species. In profile/split screen operates at 500 kHz; in down sounder at 500 kHz.



*TCS385-500 in full screen profile showing dusky's and northerns entering the net.*

Improve catch volume, quality and help avoid bycatch while saving fuel.

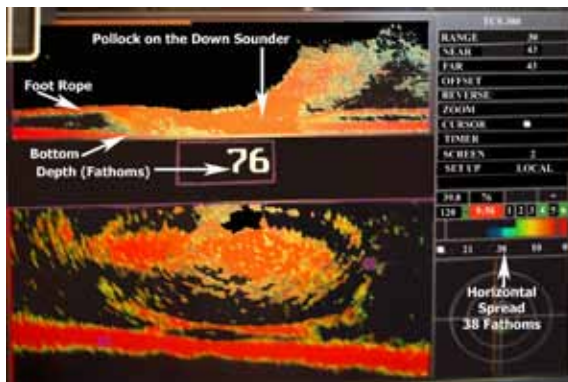
## TCS385-300 **ORANGE**:

**Greater Distance:** The TCS385-300 trawl sled is ideal for watching the larger trawl nets to ensure fish are not escaping. Popular for cod nets and mid-water trawl nets. Profile/split screen operates at 300 kHz; down sounder at 200 kHz.

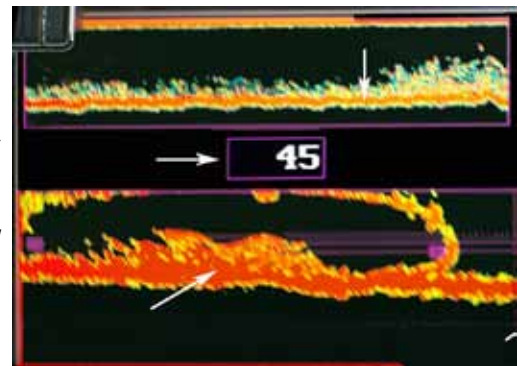


Model 385-300

*TCS385-300 in split screen showing pollock on the down sounder and fish diving under the footrope. The Captain set more wire to get under them.*



*TCS385-300 in split screen showing cod and sole entering the net.*



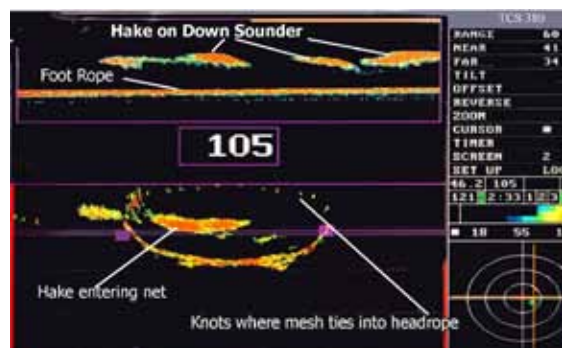
Profile the net opening with the compact lightweight WESMAR trawl sleds

## TCS385-180 **GREEN**:

Model 385-180



**Plenty of Power:** The TCS385-180 trawl sled has the power to paint the large nets and see the footrope and bottom in high resolution. Designed for the smaller vessels pulling larger nets and the need to see at greater distance. This is a long-range system that is ideal when distance trumps the need to identify fish species. Profile/split Screen 180 kHz; downsounder 110 kHz



*TCS385-180 trawling for hake with the sonar in split screen at 105 fathoms; horizontal net spread of 55 fathoms*

**Lightweight:** Each 385 sled weighs 26.5 lbs, 12 kg dry; 9.9 lbs, 4.5 kgs wet. Lightest in the industry.

# TCS785 & TCS385 Series Trawl Sonar Specifications

## TCS785-300 HEADROPE UNIT (SLED)

Working Depth: 1800m  
Frequency: 110kHz Forward Scan, 8.5 x 8.5 degrees  
110kHz Downsounder, 28 x 28 degrees  
300kHz Profile, 2.3 x 25 degrees  
Tilt: Forward Scan +/- 30 degrees  
Catch Sensors: 1 to 6 WESMAR sensors, 1 to 4 other sensors  
Depth Sensor: Meter, Fathom, Feet  
Temperature: +0.1 degree Centigrade  
Weight: 65 lbs, 29.5 kg dry; 20.9 lbs, 9.5 kg wet

## TCS785-180 HEADROPE UNIT (SLED)

Working Depth: 1800m  
Frequency: 110kHz Forward Scan, 8.5 x 8.5 degrees  
110kHz Downsounder, 28 x 28 degrees  
180kHz Profile, 4 x 30 degrees  
Stabilizer: Forward Scan +/- 30 degrees  
Catch Sensors: 1 to 6 WESMAR sensors, 1 to 4 other sensors  
Depth Sensor: Meter, Fathom, Feet  
Temperature: +0.1 degree Centigrade  
Weight: 65 lbs, 29.5 kg dry; 20.9 lbs, 9.5 kg wet

## TCS385-500 HEADROPE UNIT (SLED)

Working Depth: 1000m  
Frequency: 500kHz Down Sounder  
500kHz Profile  
Catch Sensors: 1 to 6 WESMAR sensors, 1 to 4 other sensors  
Depth Sensor: Meter, Fathom, Feet  
Temperature: +0.1 degree Centigrade  
Weight: 26.5 lbs, 12 kg dry; 9.9 lbs, 4.5 kg wet

## TCS385-300 HEADROPE UNIT (SLED)

Working Depth: 1000m  
Frequency: 200kHz Down Sounder  
300kHz Profile  
Catch Sensors: 1 to 6 WESMAR sensors, 1 to 4 other sensors  
Depth Sensor: Meter, Fathom, Feet  
Temperature: +0.1 degree Centigrade  
Weight: 26.5 lbs, 12 kg dry; 9.9 lbs, 4.5 kg wet

## TCS385-180 HEADROPE UNIT (SLED)

Working Depth: 1000m  
Frequency: 110kHz Down Sounder  
180kHz Profile  
Catch Sensors: 1 to 6 WESMAR sensors, 1 to 4 other sensors  
Depth Sensor: Meter, Fathom, Feet  
Temperature: +0.1 degree Centigrade  
Weight: 26.5 lbs, 12 kg dry; 9.9 lbs, 4.5 kg wet



### Hand Control:

For ease of operation and more accessible throughout the wheelhouse.

### Dual Battery Charger:

Input voltage: 110 to 220 VAC  
Charge current: constant, 400 ma  
Dual charger: one or two eggs at any time  
Charge time: CS20, 5 hours  
Maintenance charge: Pre-charge, top off and trickle pulse



### Catch Sensors:

A large codend can use up to six sensors to monitor the catch rate. WESMAR catch sensors are quick to respond providing the best protection from overfilling the net.



WESMAR's low frequency trawl sonars use a gold plated high resolution transducer.



Western Marine Electronics 14120 NE 200th Street, Woodinville, WA 98072  
Tel: (425) 481-2296 Fax: (425) 486-0909  
www.wesmar.com dsoderberg@wesmar.com